



Newsletter

Spring Term 2019

This is the first of our termly newsletters. Following a survey of parents in the Autumn, we decided to change to a newsletter each term to publish information of interest to the whole school community. We hope you enjoy reading it and find it useful.

This term's **Skills Progression** focus has been **Empathy and Equity**. We have used the theme to focus on learning the following skills:

- *I can talk about how I feel*
- *I can manage my own feelings*
- *I can understand the feelings of others*
- *I recognise we are all unique and celebrate this*
- *I can put myself in someone else's shoes and show empathy*
- *I can read body language well*
- *I am open minded and can look at things from different perspectives*



Our assemblies have all been themed on this and have covered lots of areas including: Understanding empathy and equity; the difference between equity and equality; understanding how it might feel in other's shoes; celebrating International Women's Day and the impact of campaigns and protest to improve the way society works. The Skills progression also gets followed up in class.

Our focus for next term is:



The Reflective Perspective: We want our children to develop an ability to think for themselves, see things from a range of perspectives, improve on their own standards and strive to be and give their best. We believe it is important to thoughtfully reflect upon learning, make judgements and evaluations and learn from these reflections.

FROMS

Our brilliant fundraisers have been hard at work again. They have over the last year or so been raising funds to replace the school minibus whilst keeping up lovely school routines like our Christmas cinema trip. With the help of the committee, we took the decision to spend a little money on tidying up the current minibus and releasing funds for some creative work in the school. The children have enjoyed a fantastic puppet show and workshops from the team at the Minack Theatre and working with professional illustrator Erwin. Thank you to everyone who has contributed to our Easter Egg raffle this year. The children are getting really eggcited.



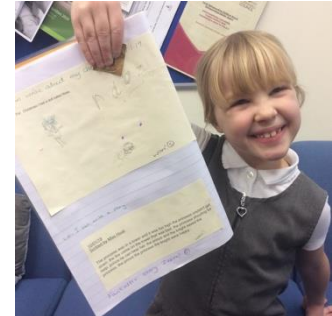
School Improvement Update

As the Truro and Penwith Academy Trust becomes more established we are increasingly seeing the positive impact on the children, particularly in terms of staff professional development and improved classroom practice. The chance for our staff to work as part of professional networks and exchange and research different pedagogical theory has been really well received.

Our school improvement priorities this year in English are:

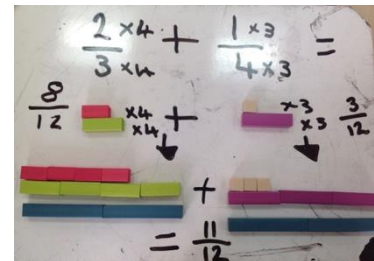
- Increase the percentage of pupils working at greater depth in writing across the school.
- Improve outcomes in GPS focussed on spelling

Mr Mullaney has been hard at work supporting the staff in extending our children's writing and improving techniques for redrafting and "polishing" their writing. Mr Mullaney has worked with other English leads across the trust and brought lots of good ideas back to Mousehole. We have now embedded a new spelling programme and noticed a real improvement in the children's spelling, particularly their independent spelling which was all kicked off by the successful Spelling Bee at the beginning of the year.



In maths the priorities are:

- Increase the number of children working at greater depth in maths
- Ensure all pupil premium children make good progress in maths



We have been developing our maths practice over the last few years and are now at a point where we are really seeing the impact. As the children progress through the school, they have a greater depth of understanding, fewer gaps in their understanding and are able to see the links between maths concepts. Most of the teaching staff have undertaken Maths Hub development programmes in the last 18 months. A comment from recent governor monitoring sums up improvements - *We were so impressed by the mathematical knowledge and skills of the children. Their enthusiasm to share their work from the very youngest throughout the school is a pleasure to see. They can explain the new systems in place and understand how these are helping them.*

It is important to note that whilst we have focussed some of our improvement efforts on the core subjects of maths and English we are still passionate about maintaining our extensive wider curriculum offer: weekly yoga for all children; regular woodland skills sessions with trained, experienced staff; 10-15 minutes of walking or running every day in the Mousehole March; we have more children than ever learning instruments and Miss Judge has had many of them performing together this term as a band; we are also maintaining a celebration and focus on the creative arts through interesting projects and visiting artists.



Class projects this term:



What Will You Discover?

Dinghy Class embarked on an adventure as explorers of the polar regions. They traced the journey of some famous British explorers and used their knowledge to plan an exciting expedition for Billy Bear. They went on to look at inventors and inventions, which involved lots of investigating and experimenting. Their term's learning culminated in an exciting Whizz Bang Pop Workshop, where the children were the scientist teaching their parents a thing or two!

Do you believe in dragons?

We have heard tales of dragons from around the world, have been detectives, following clues and discovered an egg in our own field. We met a Dragonologist for guidance, learned how to care for our egg, make potions and write our names in Dragonese. We developed our fire skills, making Chinese dragon charms in pewter and finally became the dragon experts, hosting our own museum featuring dragon bread, Oracle bones, flying dragons and much more. Do you believe in Dragons? Skiffs certainly do!



Have we lost track of the golden age of steam and gone off the rails?

Lugger Class investigated Cornwall's role in the birth of steam powered transport. The children planned a steam railway journey from Bodmin Parkway to the historical station of Bodmin General and on to Wenford. Vintage GWR posters were studied and the children created their own, coupled with performance poetry, inspired by Robert Louis Stevenson's - From a Railway Carriage.



Fantastic Beasts – where could you find them?

This spring term Schooner Class has taken inspiration from JK Rowling's Fantastic Beasts. After learning about real world habitats, classification, adaptation and evolution the children designed their own fantastic beasts. These incredible creatures informed our non-fiction writing and EPIC finding tales. The children have created an Encyclopaedia of Schooner Class Phenomenal Creatures, with the help of Erwin, a brilliant professional illustrator. The beautifully illustrated book will be on display in the library from the end of the spring term.

